

SOP Upgrade Encryption Firmware via Web 2.0

NOTE:

SNMP Web Pro 2.0 uses encryption and signature verification firmware starting from version 2.0.1.3. So when updating, it is important to differentiate between versions first. The following will introduce version updates before or after 2.0.1.3.

Step 1 : unzip SNMP2.0_FirmwareXXX.rar (password: 123).

Step2 : Close the firewall. (optional)

Step3 : Open SNMP Web Manager.

Step4 : Scan to obtain the SNMP web Pro IP address to be updated online. Refer to Diagram 1-1 . Then open the web address in the browser. Refer to Diagram 1-2.

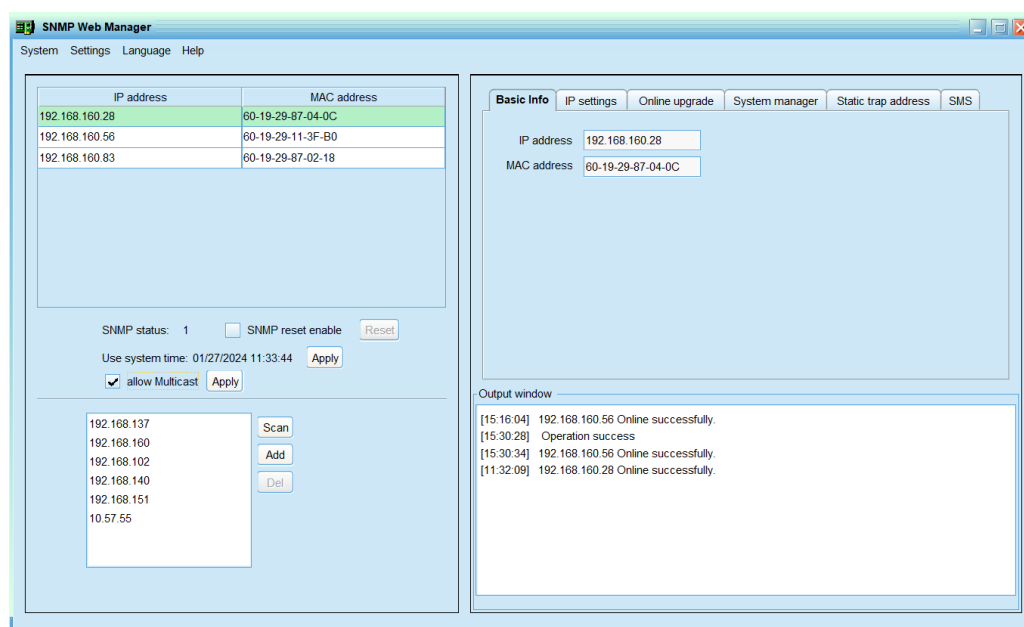


Diagram 1-1

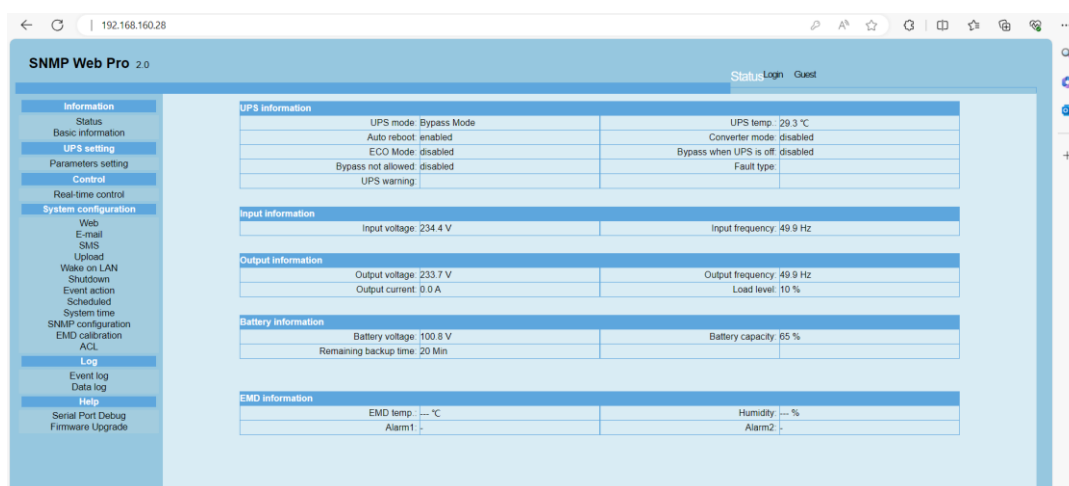


Diagram 1-2

Step5 : Click “Firmware Upgrade” to update online.

NOTE: Program file will be named *upgrade2XXX.tar.gz*

1. If the firmware version of SNMP Web Pro 2.0 is after 2.0.1.3 (inclusive), it can be updated directly. Refer to Diagram 1-3.

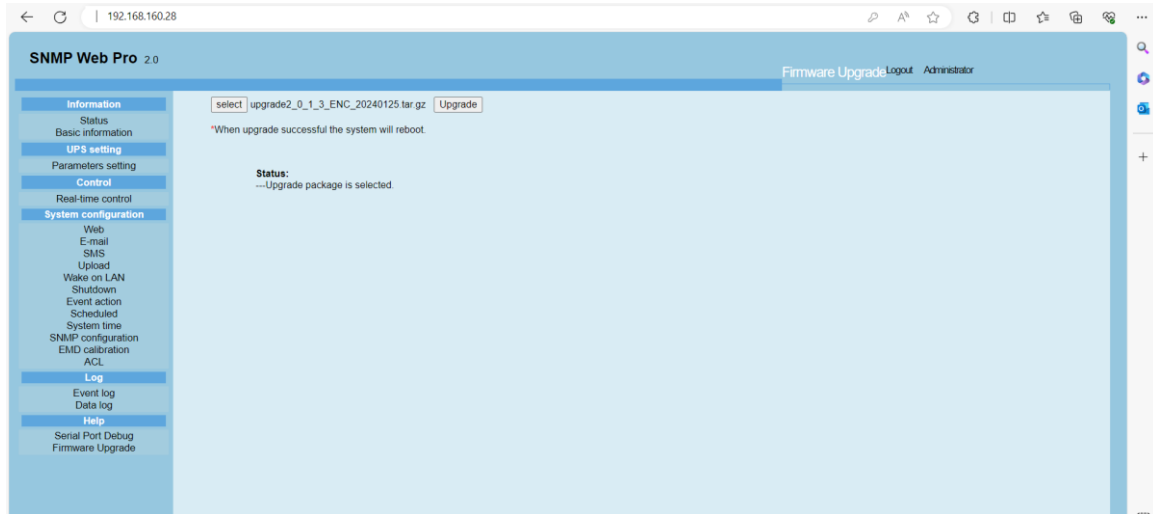


Diagram 1-3

2. If the firmware version of SNMP Web Pro 2.0 is before 2.0.1.3, it is necessary to first configure the environment of SNMP Web Pro 2.0 so that it can update the encryption and signature firmware.

- a) Update the provided configuration environment package. The configuration process is similar to updating firmware, but SNMP does not restart. Refer to Diagram 1-4.

NOTE: configuration environment package will be named *upgrade2 -EnvConfigure XXX.tar.gz*. Please go to the following path to download.



upgrade2-EnvConfigure_20240125.tar.gz

<https://ftp.voltronic.com.tw/V/ViewPower-C76A89B88C10454AA513/SNMPWebPro/Configuration%20package/SNMP%20Web%20Pro2.0/>

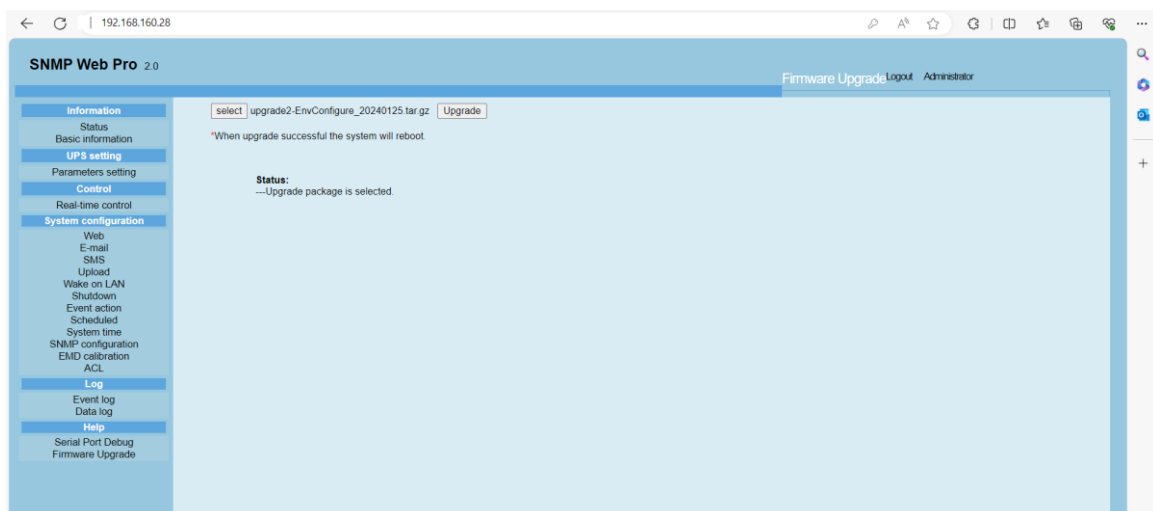


Diagram 1-4

- b) Click upgrade to configure. After completing the configuration , please clear browser cache for page configuration to take effect. This can ensure that future firmware updates will not have unnecessary issues.Refer to Diagram 1-5 and Diagram 1-6.

NOTE: 1. Need password, default 12345678.

2. Clearing browser cache can be done using the **Shift+Ctrl+Delete** key combination.

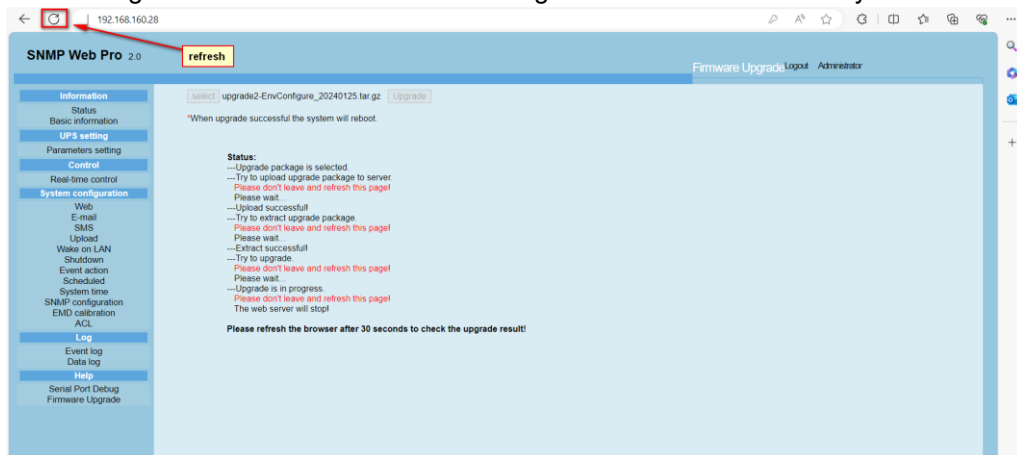


Diagram 1-5

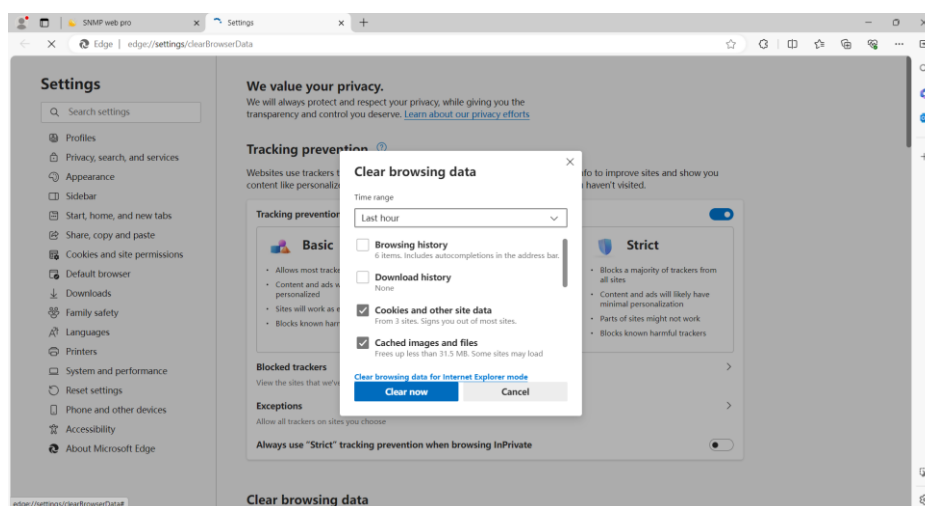


Diagram 1-6

- c) Afterwards, you can choose the provided encryption and signature firmware. Refer to Diagram 1-7.

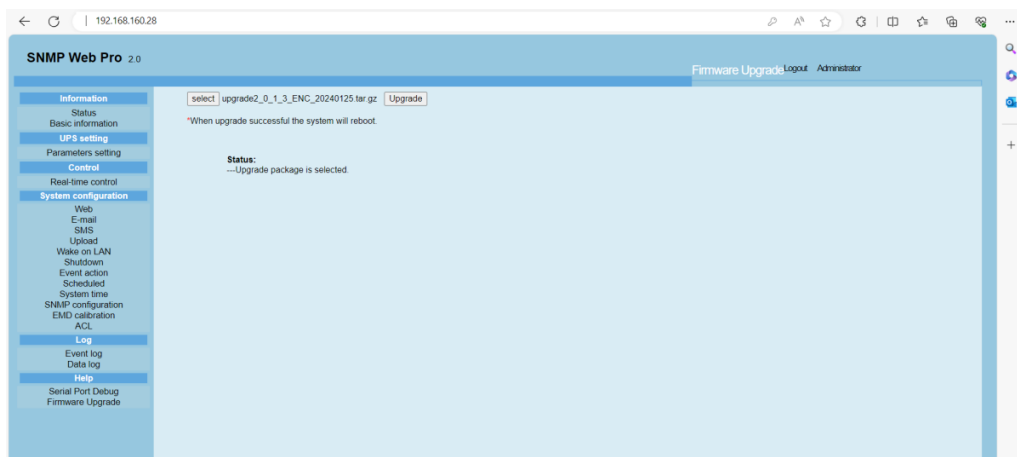


Diagram 1-7

Step6 : Click “Upgrade” button to execute upgrade action.

NOTE: Need password, default 12345678.

Step7 : When upgrade is complete, SNMP web Pro will restart . You can follow the prompts on the page. Refer to Diagram 1-8.

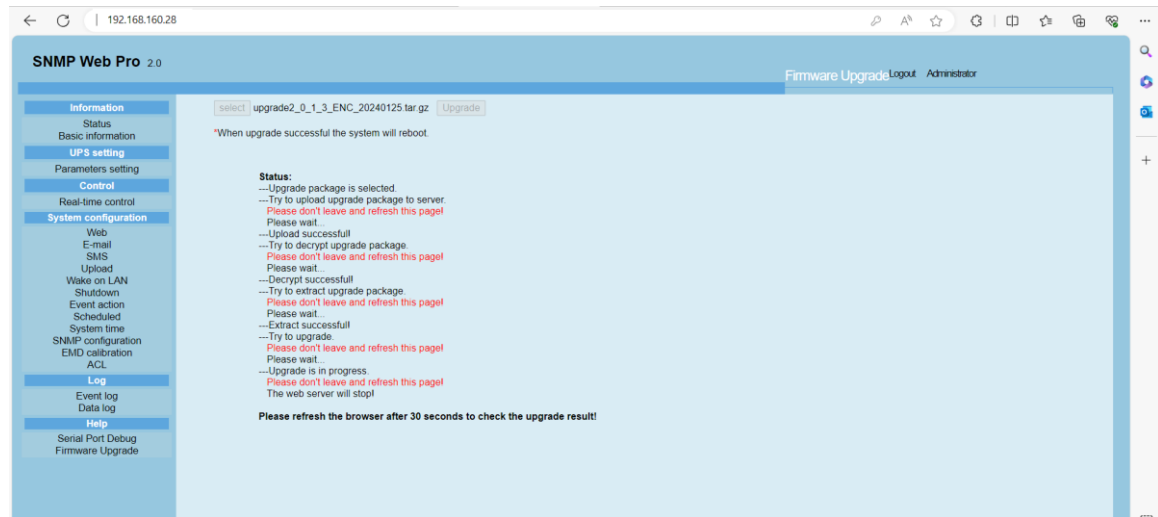


Diagram 1-8

***Other:**

1) What if the firmware version of SNMP Web Pro2.0 is before 2.0.1.3, but the encryption firmware has been updated? Refer to Diagram 1-9.

It won't have any impact, it's just an update failure. At this point, simply configure the provided configuration package.

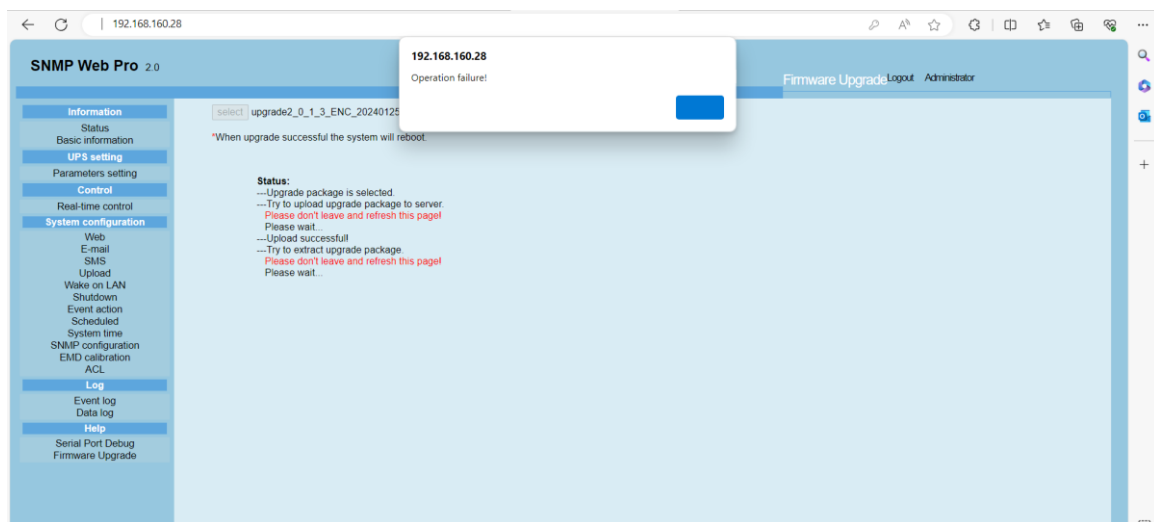


Diagram 1-9

2) What happens if the encryption firmware is updated without refreshing or clearing the cache after configuring the configuration package?

*It may prompt "operation failure" or "unknown error". So remember to clear the cache to prevent operation failure, please use the combination of **Shift+Ctrl+Delete**. Refer to Diagram 1-10.*

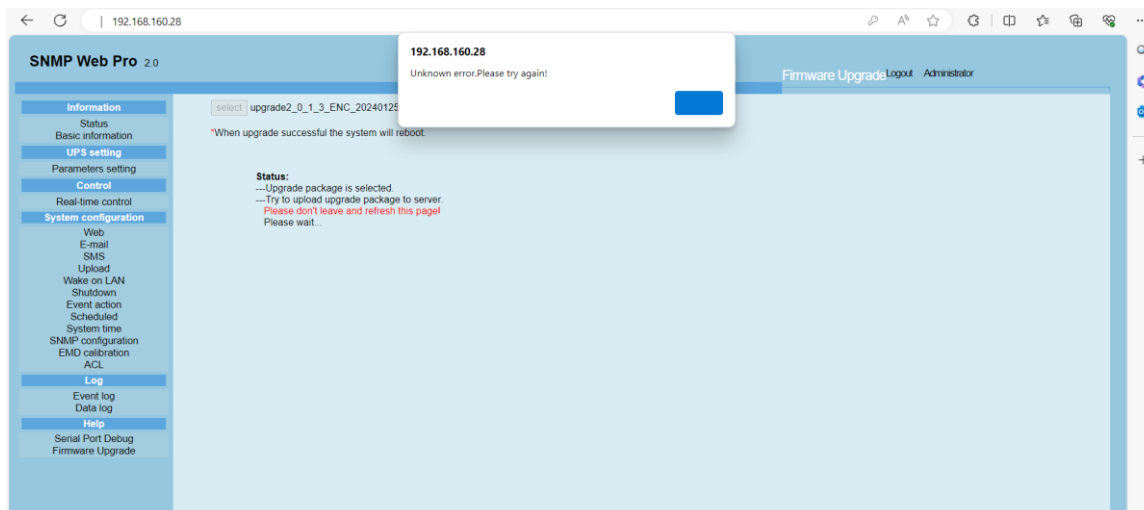


Diagram 1-10

3) After updating the new firmware, it was found that logging in with the default password 12345678 failed?

*This may be because the firmware later modified the request or security authentication method. For example, changing the "Get" request method to "Post", etc. This may cause the browser to still have the previous page cache after firmware updates, resulting in unsynchronized front-end and back-end authentication. So just clear the browser cache. please use the combination of **Shift+Ctrl+Delete**. Refer to Diagram 1-11.*

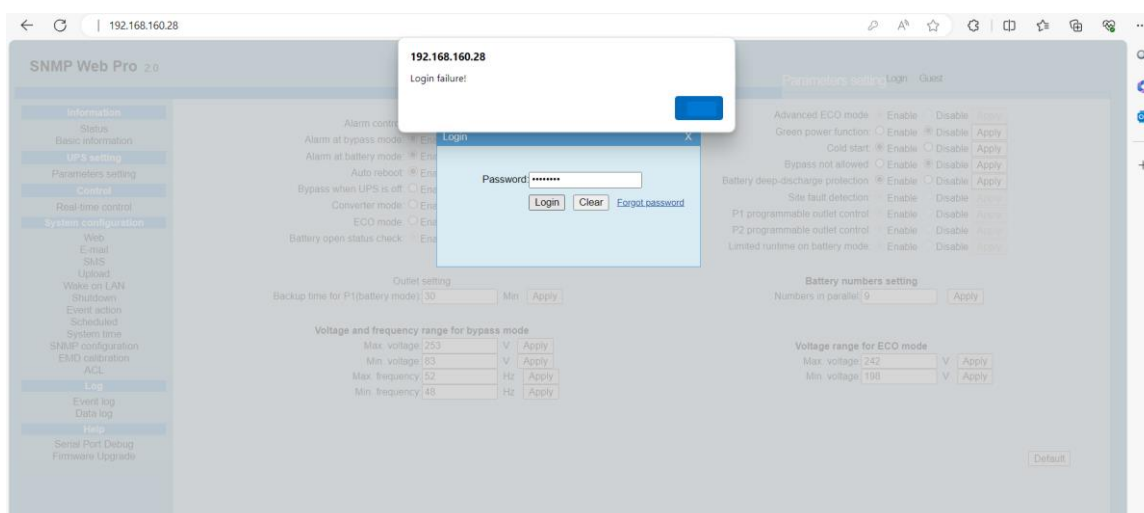


Diagram 1-11